

**Ellen Mellon**  
Level 2



© 2025 A.H.A.V.A.

[ahava.org@gmail.com](mailto:ahava.org@gmail.com)

A.H.A.V.A. grants permission to photocopy these pages for individual/classroom/school use, but not for commercial purposes.

by Rivkah L. Aviad  
Illustrations by Gita Weinberger

1

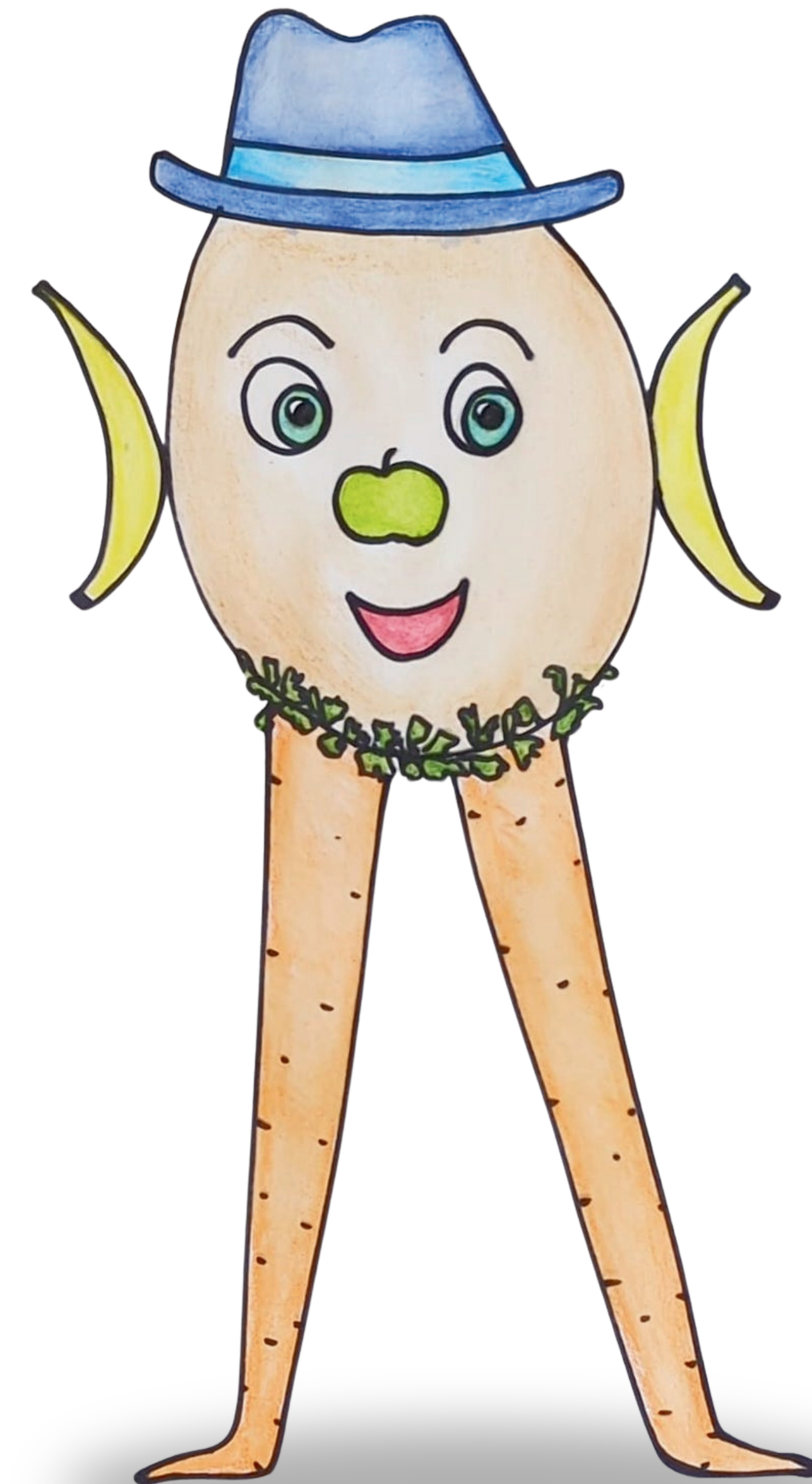
Ellen Melon has  
a head like a melon  
and ears like bananas.



She has legs like carrots  
and a nose like an apple.

2

Ellen Melon's dad has  
a head like a melon  
and ears like bananas.



He has legs like carrots  
and a nose like an apple.

Ellen Melon's mom has  
a head like a melon  
and ears like bananas.



She has legs like carrots  
and a nose like an apple.

Ellen Melon's sister has  
a head like a melon  
and ears like bananas.



She has legs like carrots  
and a nose like an apple.



Ellen Melon does not eat melons.  
 She does not eat bananas.  
 She does not eat carrots  
 and she does not eat apples.

What does Ellen Melon eat?



Ellen Melon eats pasta.  
 She eats hamburgers.  
 She eats falafel  
 and she eats chips.

Ellen Melon eats pizza.

She eats yogurt.

She eats sandwiches

and she eats salad.



What do **you** eat?

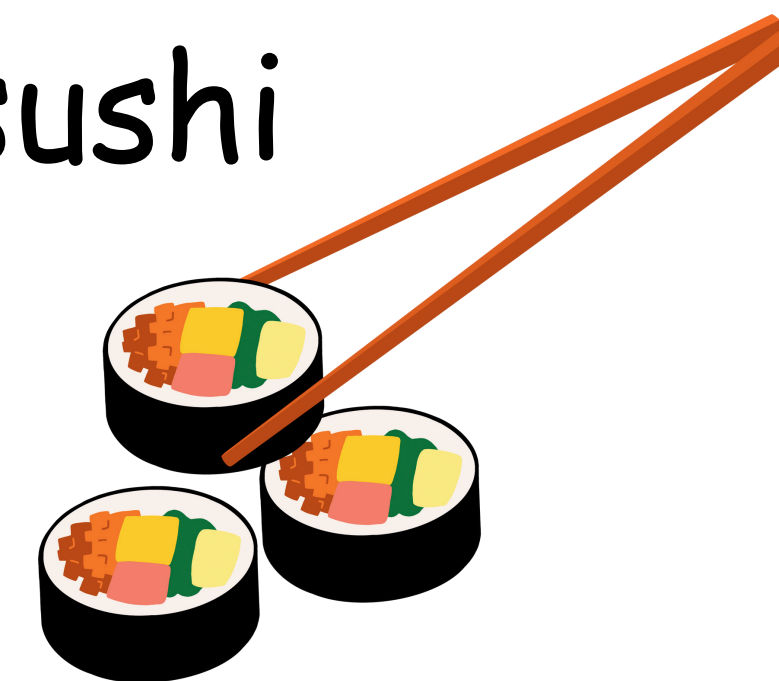


broccoli

pita



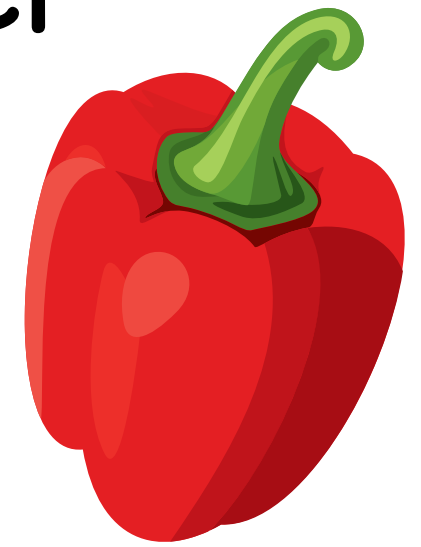
sushi



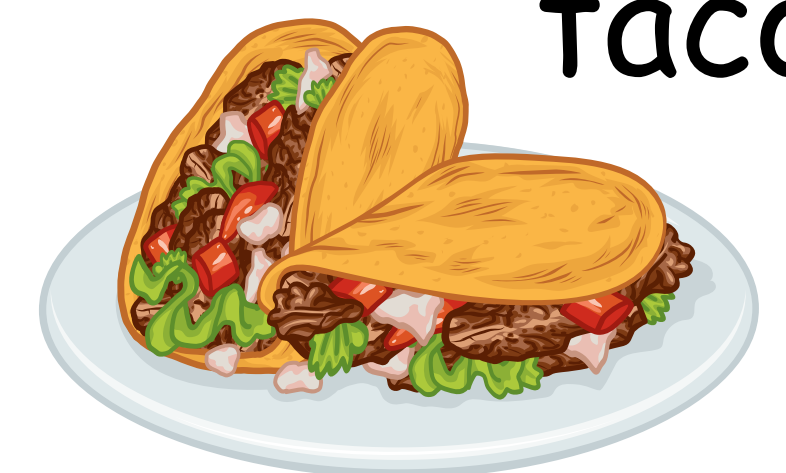
shakshuka



pepper



tacos



**I eat...**